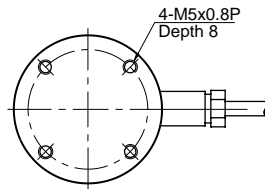
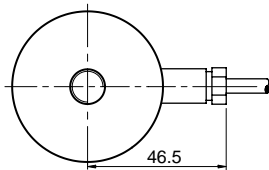


## Model CDES Series

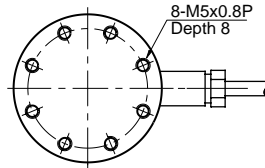
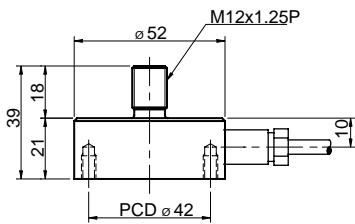
Tension & Compression  
Low Profile Load Cell (50Kg ~ 2t)

The model CDES miniature type is designed for low profile tension and compression service. Its compact size makes the cell ideal for a wide range of applications including testing & weighing systems.

- 17-4PH Stainless steel construction
- Fully welded seal with stainless steel cover for hostile environment applications.
- Compact size with low profile.



Bottom View (50 ~ 1000Kg)

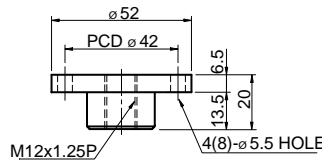
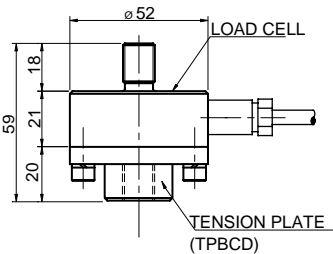


Bottom View (2t)

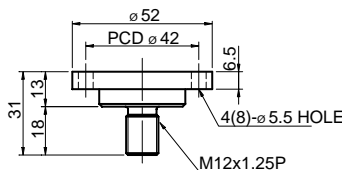
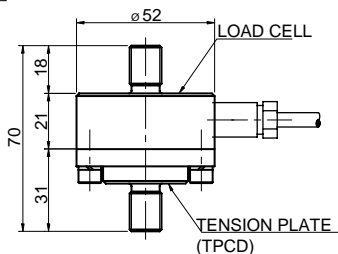
### SPECIFICATIONS

MODEL	CDES
Rated capacity (R.C.)	50,100,200,500Kg
	1,2t
Rated output(R.O.)	2mV/V ± 0.25%
Non-linearity	≤ 0.15% R.O.
Hysteresis	≤ 0.15% R.O.
Non-repeatability	≤ 0.1% R.O.
Creep error	≤ 0.03% in 20min.
Zero balance	≤ 1% R.O.
Compensated temperature range	-10 ~ 70°C
Operating temperature range	-20 ~ 80°C
Temp. effect on rated output	≤ 0.1% LOAD/10 °C
Temp. effect on zero balance	≤ 0.1% R.O./10 °C
Terminal input resistance	700 Ohms ± 10 Ohms
Terminal output resistance	700 Ohms ± 10 Ohms
Insulation resistance (Min.)	2000 MOhms at 50V DC
Excitation Voltage	10V(Recommended) /15V(Maximum)
Electrical connection	ø5mmx3m(22AWG x 4Core Shielded)
Protection class	meets IP 67
Safe overload	150% R.C
Ultimate overload	300% R.C

### Tension Plate : TPBCD



### Tension Plate : TPCD



### ORDERING INFORMATION

**Load Cell** CDES - 2T  
 MODEL CAPACITY  
 50, 100, 200, 500Kg, 1, 2t

**Tension Plate** TPCD - 2T  
 MODEL CAPACITY  
 TPCD 50, 100, 200, 500Kg, 1, 2t  
 TPBCD

### WIRING INFORMATION

RED : EXC. (+)    WHITE : EXC. (-)  
 GREEN : SIG. (+)    BLUE : SIG. (-)  
 BARE : GND

\* Specifications are subject to change without notice

JUN.2002