

## Model OBUX Series

Single Point Load Cell (50~ 500Kg)

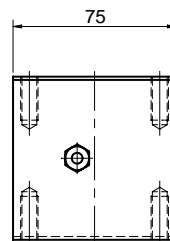
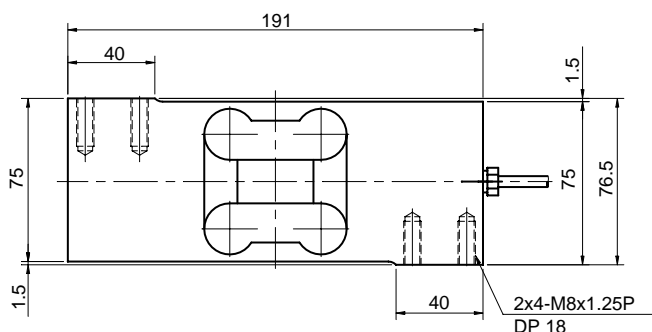
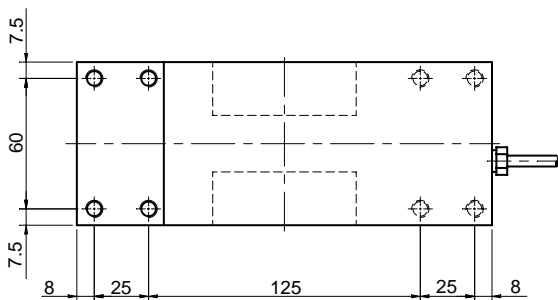
The OBUX series single point load cell is designed for platform scale, hopper scale and automatic check weighing systems where great accuracy, reliability and fast measurement are required.



### SPECIFICATIONS

MODEL	OBUX	OBUXT
Rated capacity (R.C.)	50,100, 200, 300, 500Kg	
Rated output(R.O.)	2mV/V ± 10%	2mV/V ± 0.5%
Non-linearity	≤ 0.02% R.O.	
Hysteresis	≤ 0.02% R.O.	
Non-repeatability	≤ 0.02% R.O.	
Creep error	≤ 0.03% in 20min.	
Zero balance	≤ 5% R.O.	
Compensated temperature range	-10 ~ 70°C	
Operating temperature range	-20 ~ 80°C	
Temp. effect on rated output	≤ 0.012% LOAD/10°C	
Temp. effect on zero balance	≤ 0.04% R.O./10°C	
Terminal input resistance	415 Ohms ±15 Ohms	
Terminal output resistance	350 Ohms ±5 Ohms	
Insulation resistance (Min.)	2000 MOhms at 50V DC	
Excitation Voltage	10V(Recommended) /15V(Maximum)	
Electrical connection	ø5mmx3m(22AWG x 4Core Shielded)	
Protection class	meets IP 67	
Safe overload	150% R.C	
Ultimate overload	300% R.C	

Capacity	Allowable Platform Size
50~500Kg(0.981 ~4.903KN)	700 x 700mm



#### ORDERING INFORMATION

##### OBUX - 500K

MODEL	CAPACITY
OBUX	50,100, 200, 300, 500Kg
OBUXT	

#### WIRING INFORMATION

RED	: EXC. (+)	WHITE	: EXC. (-)
GREEN	: SIG. (+)	BLUE	: SIG. (-)
BARE	: GND		

\* Specifications are subject to change without notice

OCT.2000

BONGSHIN LOADCELL CO., LTD.

148,SANGDAEWON-DONG,JUNGWON-KU, SEONGNAM-CITY, GYEONGGI-DO, KOREA  
 TEL : 82-31-742-6661 www.bongshin.com  
 FAX : 82-31-742-6664 E-mail : loadcell@bongshin.com